



*Suitable for a house of upto 4 bedrooms
or a small industrial unit upto 18 persons*

Why choose an ecodigester?

- **Simple process**
 - quiet operation
- **Simple installation**
 - no concrete back-fill required in dry ground
- **Simple maintenance**
 - no moving parts underground
- **Robust construction**
 - manufactured from heavy-duty GRP
- **Long de-sludge interval**
 - dependent on use between 2–5 years

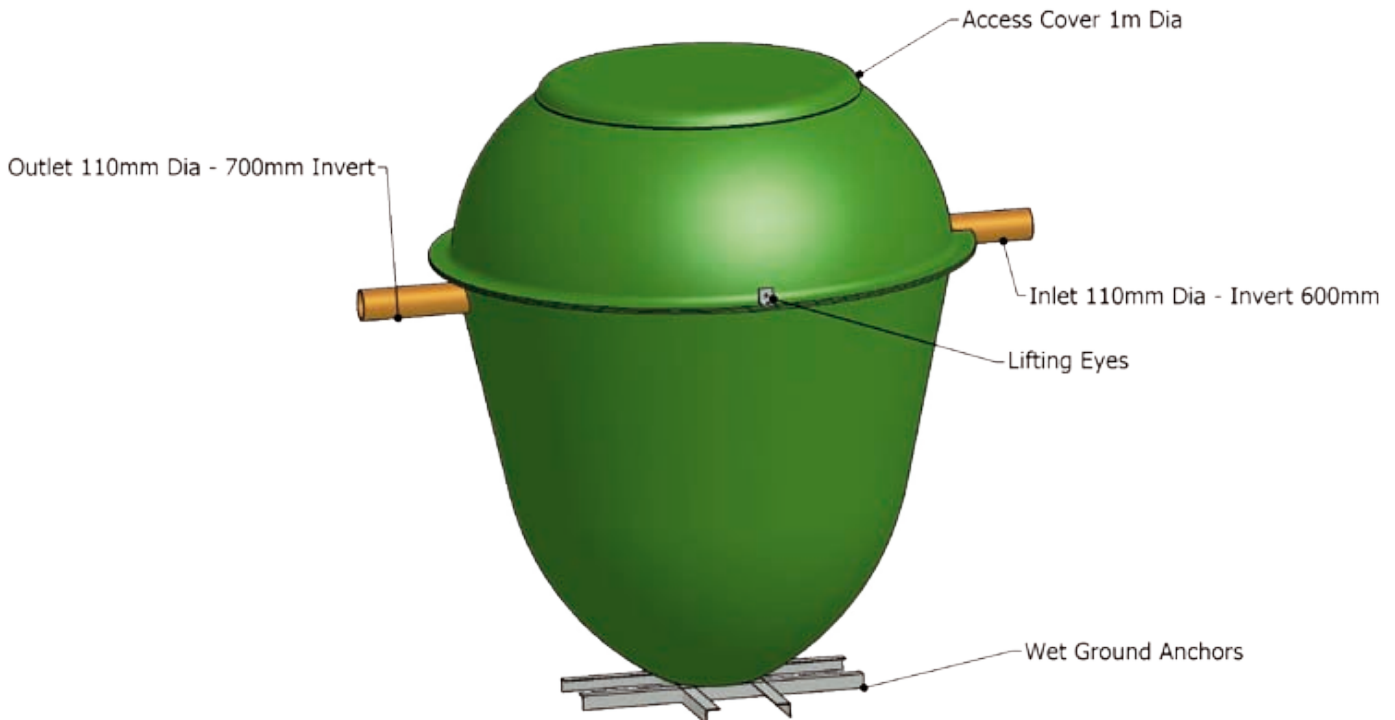
Performance

The plant is designed to produce an effluent quality of:

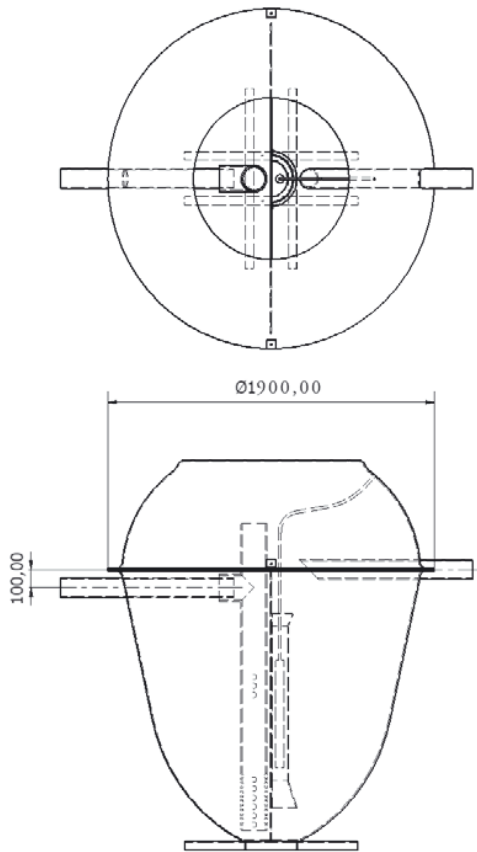
- | | |
|------------------------------|---------|
| • BOD.5 | 20 mg/l |
| • Suspended Solids | 30 mg/l |
| • Ammoniacal Nitrogen (as N) | 20 mg/l |

The effluent can be discharged to a watercourse or via a soakaway, subject to approval.

Sewage flow/day 1.2m³



Model STC6 ecodigester



STC6 References

STC6 Gravity discharge	inlet drain depth	600mm	ref STC6S1
STC6 Gravity discharge	inlet drain depth	900mm	ref STC6S2
STC6 Gravity discharge	inlet drain depth	1200mm	ref STC6S3
STC6 Gravity Discharge	inlet drain depth	1500 mm	ref STCS4
STC6 Integral pump discharge	inlet drain depth	600mm	ref STC6P1
STC6 Integral pump discharge	inlet drain depth	900mm	ref STC6P2
STC6 Integral pump discharge	inlet drain depth	1200 mm	ref STC6P3
STC6 Integral pump discharge	inlet drain depth	1500mm	ref STC6P4

Dimensions

STC6S1

1900 mm wide
2200 mm deep
Weight: 270 kg

STC6 Electrical Ratings

Air Blower	240v	84w	Start current 0.47 amps
Ingegral Pump	240v	150w	Start current 2.9 amps

STC6 Integral Pump Flow

200 litres/min max head 5.2m max pipe size 32mm

Installation is simple in areas with
a high water table –

just cover the anchors with 3m³ concrete

Installation

Your ecodigester can be installed by anyone.

Simply dig a hole 300mm wider and 100mm deeper than the unit. Pour some concrete into the base of the hole, settle the unit into the hole. If possible let the concrete go off. Then back-fill with pea gravel or something similar, having first filled the ecodigester with water. The airblower is installed within 10m of the ecodigester (10m of hose supplied).

If you are installing in an area of high water table. Cover the wet ground anchors with 3m³ of concrete to a minimum depth of 300mm above the wet ground anchors. Back-fill with pea gravel or continue with the concrete.

Note. If you are installing your ecodigester at an inlet invert of deeper than 900mm then you must cover the top section with concrete to the level of the bottom of the neck, then backfill with pea gravel of similar.

Extras available for your STC6 ecodigester

- **Sample Chamber**
When discharging to a soakaway it is a requirement that you install a sample chamber so that the effluent quality can be checked periodically.
- **Integral Effluent pump**
In areas where you might have a high water table, or not enough space for a soakaway, the treated effluent can be pumped to a suitable point of discharge. The pump is 240 volt, submersible with an integrated float. It is fitted internally.
- **High Level Alarm**
If you are relying on a pump to discharge the effluent, it is important to install a warning beacon to alert to failure. This is a flashing beacon with a float switch for installing within the pump chamber.